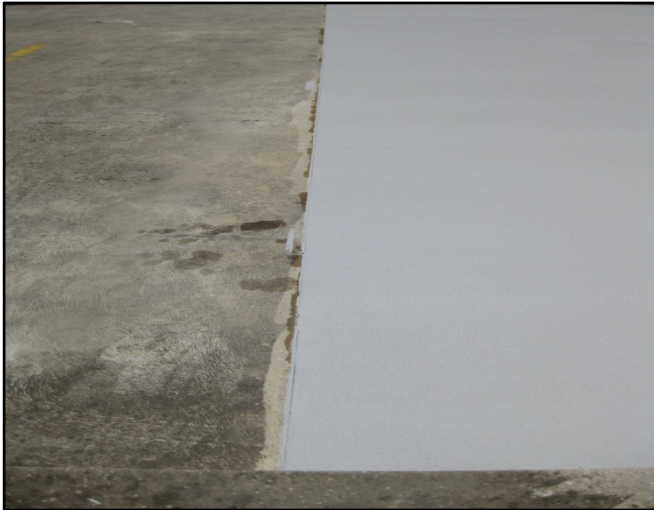


HARD WEARING TRAFFIC COAT

www.gripset.com

TECHNICAL DATA SHEET

techenquiries@gripset.com



Description

Gripset P17 is high performance one component compound designed as a trafficable protective coating over concrete and asphalt surfaces. Gripset P17 is a copolymer polyurethane that dries to form a hard wearing, high abrasion resistant waterproof coating. Available in a range of colours Gripset P17 can be used as a decorative protective coating for car parks, driveways, sports courts and general recreational areas

Features & Benefits

- * Trafficable, pedestrian and vehicular (including heavy vehicles)
- * Non shrinking, flexible (not elastomeric)
- * Resistant to fungi and algae growth
- * Excellent weathering properties
- * Excellent adhesion to surfaces
- * Excellent ponding water resistance
- * Excellent adhesion properties
- * Excellent abrasion resistance
- * Excellent water resistance
- * Good oil and fuel resistance
- * Solvent free, odourless and environmentally safe
- * Available in a range of colours

Application

- * Gripset P17 is suitable for commercial, industrial, civil and residential applications

Uses

- * Car parks
- * Driveways
- * Sports courts
- * Line Marking
- * Recreational areas
- * General areas requiring coloured decorative coating

Substrates

Substrates suitable for bonding Gripset P17 over include:

- * Concrete pavements
- * Asphalt pavements
- * Compressed cement sheeting

Surface Preparation

All Surfaces must be prepared thoroughly before commencing application. All substrates must be structurally sound, stable and clean. Building surfaces are to be free of sharp protruding surfaces, loose material, de-bonded coatings, curing membranes/agents, release agents, wax residues, foreign particles, laitance, algae and moss, grime, oils, animal fats or grease remains.

Structurally unsound layers and surface contaminants are to be mechanically removed by abrasive blasting, blast tracking, grinding or equivalent methods. For thorough surface preparation, refer to Gripset SC (algae and moss remover) and Gripset DG (water based oil degreaser) products.

For asphalt surfaces, all deep voids and heavily pitted areas to be filled using Gripset Patch-Phalt repair compound. For repairs to concrete surfaces, Gripset Patch-Crete to be used

Priming

ASPHALT SURFACES

For asphalt surfaces priming is not required

CONCRETE SURFACES

Concrete surfaces are to be primed using Gripset P10 primer applied by brush or roller at a minimum coverage of 1 litre per 6m². Allow to dry for a minimum 24 hours before applying P17 Traffic Coat. Primer must be tack free before applying.

Application

ASPHALT SURFACES

Gripset P17 Traffic Coat is to be applied in a minimum total coverage of 1litre/m². Apply any subsequent coats at different directions to the previous coat. Coverage is dependent upon surface conditions and will vary accordingly as uneven and porous surfaces will require greater coverage. Application by brush or roller or squeegee. Allow 2-4 hours drying between coats of Gripset P17

CONCRETE SURFACES

Gripset P17 Traffic Coat is to be applied in a minimum total coverage of 1litre/2m². Apply any subsequent coats at different directions to the previous coat.

Application by brush or roller or squeegee. Allow 2-4 hours drying between coats of Gripset P17

Storage

- * Best stored at room temperature.
- * Avoid cold freezing conditions and off concrete floors.
- * Do not store in direct sunlight.
- * Shelf life is 12 months in original unopened container.

Packaging

- * 15 litre pails

HARD WEARING TRAFFIC COAT

www.gripset.com

TECHNICAL DATA SHEET

techenquiries@gripset.com

Precautions

- * Do not use on wet substrates or when rain is imminent.
- * Do not apply when surface temperature is below 5°C or above 35°C.
- * Material Safety Data sheet (MSDS) available
- * For further information contact technical department of Gripset Industries

Clean up

- * In water while wet.
- * Once dried product needs to be removed mechanically

Technical Data

Form	Heavy viscous paint
Drying Based on normal ambient temperatures of 20°C *Temperature, humidity and porosity will vary dry times	Tack free: 1-2 hours Re-coat: 4 hours Dry film: 24 hours Traffic: 24 hours
Specific Gravity	1.56kg/litre
Shore A Hardness (ASTM D2240-97)	112
Adhesion to substrates (Erichsen 525 Method)	After 28 days
• Concrete Primed with P10	1.8Mpa
• Compressed cement sheet	1.5Mpa
• Plywood	1.6Mpa
Elongation (AS4858)	45%
Accelerated Weathering (Xenon Arc)	No physical changes after 500hours
Water pressure resistance	Water tight at 1.5 bar for > 50 hours
Water vapour permeance (ASTM E96)	2 g/Pa.s.m ²

VOC Content (ISO 13741 – 1)	0.02g/litre
------------------------------------	-------------

Notes

It is recommended before commencing the application; that adhesion of products to be used (e.g. primers, membranes, coatings adhesives etc) is tested over a typical area of the prepared surface to ensure satisfactory adhesion. It is the responsibility of the applicator to carry this out and accept the substrate suitability before any application starts. Gripset Industries offers a service for pre testing adhesion to surfaces for large commercial areas or unusual substrates. For further details contact Gripset Industries.

Details contained in product data sheets are general. For any situation or items not covered in this data sheet, it is the responsibility of the applicator to check with Gripset Technical Services before commencing the application. A written confirmation will then be issued by Gripset Technical Services.

Gripset Industries Pty Ltd

ABN: 41 094 789 929

Telephone: +61 (8) 8124-7300 or 1800 650 435

Email: techenquiries@gripset.com

Website: www.gripset.com

Product Disclaimer

This Product Data Sheet (PDS) summarises our best knowledge of the product, including how to use and apply the product based on the information available at the time. You should read this PDS carefully and consider the information in the context of how the product will be used, including in conjunction with any other product and the type of surfaces to, and the manner in which, the product will be applied. Our responsibility for products sold is subject to our standard terms and conditions of sale. Gripset Industries does not accept any liability either directly or indirectly for any losses suffered in connection with the use or application of the product whether or not in accordance with any advice, specification, recommendation or information given by it.